

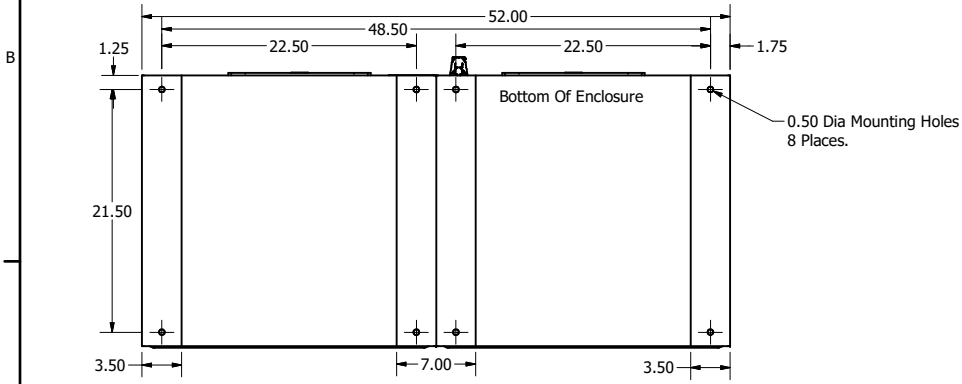
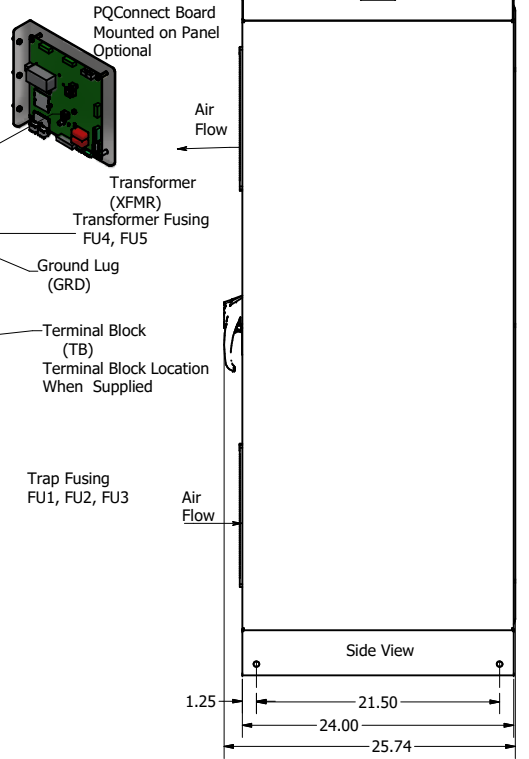
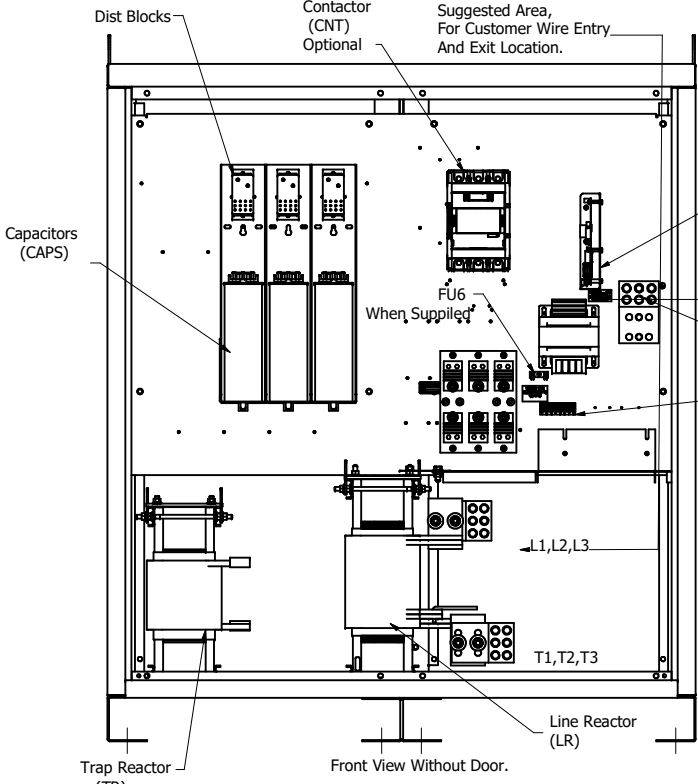
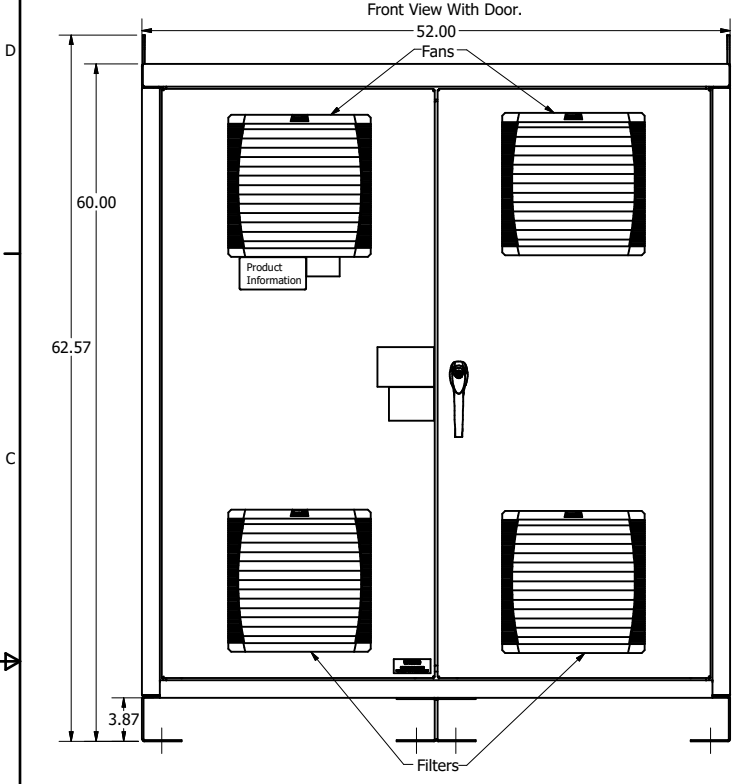
HGP Part Number	HorsePower (HP)	kVar	Maximum Amps (A)	Harmonic	Voltage (V)	Hz.	Phase
HGP0600AW1---	600	180	720	5th	480	60	3

Note: For Torque Information See IOM Manual.

Customer Connections:
L1, L2, L3, T1, T2, T3, and Ground Lug.
Wire Range- Three, 600MCM-2AWG

HGP Enclosed Type 1 Part Number	Schematic Drawing #	Approx Weight (LBS)
HGP0600AW1S0000	28697-5S	1236
HGP0600AW1C0000	28697-5	1250
HGP0600AW1C*000	29597-PQ	1252

*** = Communication Option**
0 = No Connectivity
1 = PQconnect w/Modbus RTU over RS485
2 = PQconnect w/Ethernet IP



HGP0600AW-----			
Components	1S0000	1C0000	1C1000
Line Reactor (LR)	X	X	X
Trap Reactor (TR)	X	X	X
Capacitor (Cap)	X	X	X
Trap Fusing, FU1, FU2, FU3	X	X	X
Contactor (CNT)		X	X
Transformer (XFMR)	X	X	X
XFMR Fusing, FU4, FU5	X	X	X
PQConnect Board			X

Customer Is Responsible For Installation to Meet All National And Local Electrical Codes.

Material(s) Shall be RoHS Compliant

THE INFORMATION AND DESIGNS CONTAINED IN THIS DRAWING ARE CONFIDENTIAL AND THE PROPRIETARY PROPERTY OF ALLIED MOTION TECHNOLOGIES INC. AND ITS SUBSIDIARIES. NEITHER THIS DESIGN NOR ANY INFORMATION CONTAINED IN THIS DRAWING MAY BE REPRODUCED OR DISCLOSED TO OTHERS WITHOUT THE EXPRESS WRITTEN CONSENT OF ALLIED MOTION TECHNOLOGIES INC. AND ITS SUBSIDIARIES.	F	6403 KDRY1TTX2 to KDRX1STT	9/12/2023	DSW	DECIMAL	.XX ± .25 .XXX ± .10
	E	6024, PQ Options Added	8/1/2023	DSW	FRACTIONAL	± 1/16
	D	5628, GE to ABB, CNT	6/16/2021	DSW	ANGULAR	± 1°
	C	Add PQ Connect	6/20/18	DSW		
	NO	REVISION	DATE	BY		

W132N10611 (Rev 13) 5/15/22
 Germerman, WI 53012
 © 2023 TCI, LLC

TCI
 An Official Motion Group Company

HammerGuard Passive, HGP0600AW1-----
 HGP, 600HP, 480/3/60, Type 1

DRN BY: DSW DATE: 4/10/24
 SCALE: 1/8 DRAWN BY: DSW
 105497DG

SHT 1 OF 1